

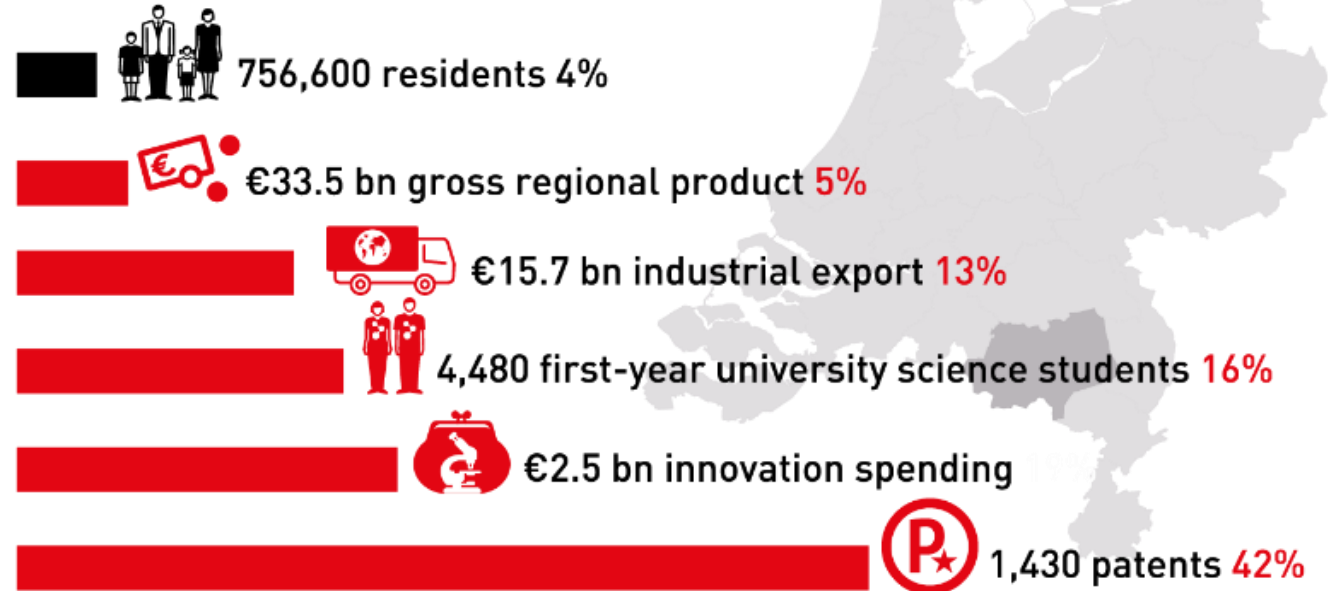
Brainport Eindhoven

Naomie Verstraeten, Programmanager International
Brainport Development

3 MAINPORTS OF THE DUTCH ECONOMY



BRAINPORT SHARE DUTCH COMPETITIVENESS



Modern industrial policy: Dutch enterprise policy

- Permanent effort to maintain an internationally competitive business environment
 - In 2011 launch of a new enterprise (or industrial) policy with 2 pillars
- Generic instruments: excellent framework conditions for all enterprises
 - Focus:
 - a) strengthening innovation framework
 - b) red-tape reduction,
 - c) improving access to finance and
 - d) ensuring better match between education system and labourmarket

Eg. tax incentives for innovation & entrepreneurship, reducing administrative burden, financing (innovative) entrepreneurship
- Sector specific: Top sector approach
 - Comprehensive sector agenda's through Public Private Partnerships: knowledge, industry and government

1950 >

COMPANY TOWN



LOPENDE BAND



RECREATIE



ONDERZOEK



STRIJP-S



TU/e



EVOLUON

CO-CREATING THE FUTURE



TURNING TECHNOLOGY INTO BUSINESS

HIGH TECH
CAMPUS
EINDHOVEN



Technology and business events



Meeting, inspiration, creativity





STRIJP-S



Strijp-S



Development

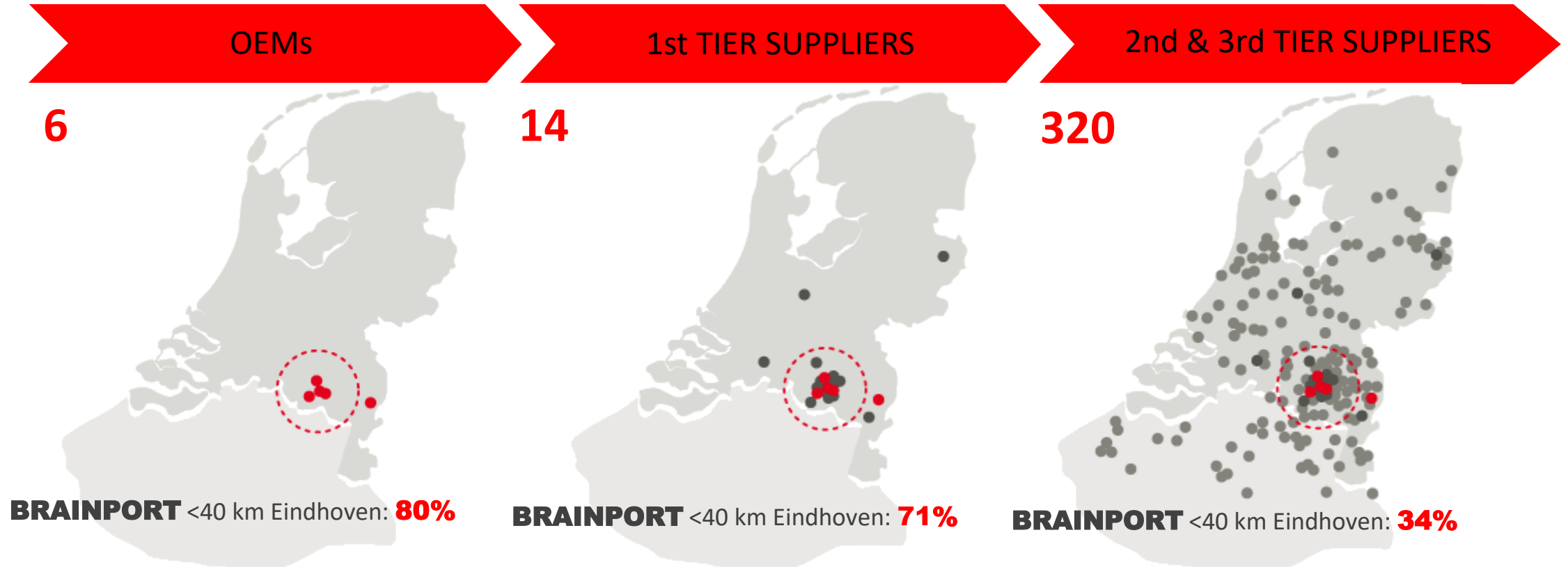


Living Lab

Brainport Eindhoven –



Interrelatedness OEM's & supply chain



STRATEGY DEVELOPMENT

BRAINPORT
NEXT GENERATION

Brainport 2020

2015

Brainport Navigator 2013
Een agenda gedragen door alle partijen



2011

HORIZON
Zuidoost-Nederland

2005

STIMULUS

Europees Economisch Stimuleringsprogramma
Regio Eindhoven

2002

1996

Business Eindhoven
CO-CREATING THE FUTURE



BRAINPORT
EINDHOVEN

Questions?